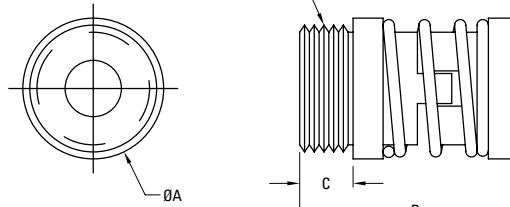




Anti-Backlash Supernuts®

SNAB Thread Mount Style



Our SNAB Model has the greatest design flexibility allowing anti-backlash assemblies through 1" diameters. All SNABs are made from our internally lubricated Acetal providing excellent lubricity and very low wear.

Flanges

3/16" to 1/4"	F25
5/16" to 3/8" (10 mm)	F37

Dimensions available on page 32.

SNAB* - 3/16" to 3/8" (10 mm) Diameter

Dia.	Lead	Part No.	Supernut® Dimensions					Preload Force (lbs)	Design Load	Max Static Load	Efficiency %	Drag Torque oz-in
			A	B (min)	B (max)	C	TH					
3/16"	0.050	SNAB1820X	0.625	1.125	1.250	0.187	9/16-18	1-3	10 lbs	150 lbs	49	2 - 4
	0.100	SNAB2-1820X									66	
	0.125	SNAB3-1824X									70	
	0.200	SNAB4-1820X									77	
	0.375	SNAB8-1821X									81	
	0.400	SNAB8-1820X									82	
6 mm	1 mm	SNAB6x1M	0.625	1.125	1.250	0.187	9/16-18	1-3	10 lbs	150 lbs	82	2 - 4
	0.031	SNAB2532X	0.625	1.125	1.250	0.187	9/16-18	1-3	25 lbs	225 lbs	37	2 - 4
0.050	SNAB2520X	30										
0.063	SNAB2516X	41										
2mm	SNAB2-25x1M	48										
3mm	SNAB3-25x1M	53										
0.125	SNAB2-2516X	62										
0.200	SNAB4-2520X	64										
0.250	SNAB4-2516X	72										
0.500	SNAB7-2514X	76										
0.750	SNAB12-2516X	81										
5/16"	0.083	SNAB3112X	0.750	1.160	1.340	0.250	5/8-18	2-5	50 lbs	350 lbs	82	2 - 4
	0.167	SNAB2-3112X									49	
	0.250	SNAB2-3108X									65	
	0.500	SNAB4-3108X									72	
	1.000	SNAB8-3108X									80	
3/8"	0.050	SNAB3720X	0.750	1.160	1.340	0.250	5/8-18	2-5	70 lbs	350 lbs	81	2 - 4
	0.063	SNAB3716X									32	
	2mm	SNAB37x2M									36	
	0.083	SNAB3712X									42	
	0.100	SNAB3710X									44	
	0.125	SNAB3708X									49	
	0.167	SNAB2-3712X									53	
	0.200	SNAB2-3710X									60	
	0.250	SNAB2-3708X									65	
	0.300	SNAB3-3710X									68	
	0.375	SNAB4-3711X									73	
	0.500	SNAB4-3708X									75	
	0.750	SNAB6-3708X									79	
	1.000	SNAB5-3705X									82	
	1.200	SNAB5-3704X									82	
10 mm	2 mm	SNAB10x2M	0.750	1.160	1.340	0.250	5/8-18	2-5	70 lbs	350 lbs	82	2 - 4
	3 mm	SNAB10x3M									41	
	4 mm	SNAB2-10x2M									53	
	5 mm	SNAB2-10x2.5M									59	
	6 mm	SNAB4-10x1.5M									64	
	10 mm	SNAB5-10x2M									67	
	12 mm	SNAB5-10x2.4M									76	
	20 mm	SNAB6-10x3.3M									78	

* SNAB nuts are only as axially stiff as the spring force in one direction.

Anti-Backlash Supernuts®

SNAB Thread Mount Style



Flanges

7/16" to 5/8" (16 mm)	F50
-----------------------	-----

Dimensions available on page 32.

SNAB*

7/16" to 5/8" (16 mm) Diameter

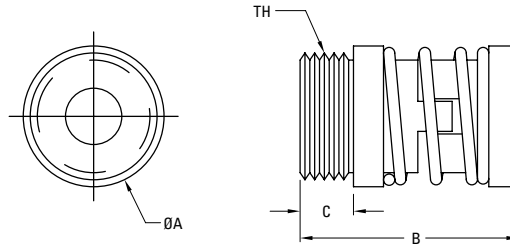
Dia.	Lead	Part No.	Supernut® Dimensions					Preload Force (lbs)	Design Load	Max Static Load	Efficiency %	Drag Torque oz-in
			A	B (min)	B (max)	C	TH					
7/16"	0.125	SNAB2-4316X	1.000	1.700	2.000	0.375	15/16-16	4-9	100 lbs	500 lbs	55	3 - 5
	0.250	SNAB2-4308X									65	
	0.500	SNAB4-4308X									76	
12 mm	3 mm	SNAB12x3M	1.000	1.700	2.000	0.375	15/16-16	4-9	100 lbs	500 lbs	48	3 - 5
	4 mm	SNAB2-12x2M									54	
	5 mm	SNAB2-12x2.5M									59	
	6 mm	SNAB3-12x2M									63	
	10 mm	SNAB4-12x2.5M									73	
	15 mm	SNAB6-12x2.5M									78	
	25 mm	SNAB10-12x2.5M									82	
1/2"	0.0625	SNAB5016X	1.000	1.700	2.000	0.375	15/16-16	4-9	150 lbs	750 lbs	30	5 - 8
	0.100	SNAB5010X									41	
	4 mm	SNAB2-50x2M									52	
	0.200	SNAB2-5010X									57	
	0.250	SNAB2-5008X									62	
	0.500	SNAB4-5008X									75	
	0.800	SNAB8-5010X									80	
	1.000	SNAB8-5008X									81	
	1.500	SNAB12-5008X									82	
5/8"	0.100	SNAB6210X	1.000	1.700	2.000	0.375	15/16-16	4-9	160 lbs	800 lbs	35	7 - 10
	0.125	SNAB6208X									40	
	0.200	SNAB2-6210X									51	
	0.250	SNAB2-6208X									57	
	0.500	SNAB4-6208X									71	
16 mm	4 mm	SNAB16x4M	1.000	1.700	2.000	0.375	15/16-16	4-9	160 lbs	800 lbs	47	7 - 10
	5 mm	SNAB2-16x2.5M									52	
	8 mm	SNAB4-16x2M									63	
	16 mm	SNAB7-16x2.3M									75	
	25 mm	SNAB5-16x5M									80	
	35 mm	SNAB7-16x5M									82	

* SNAB nuts are only as axially stiff as the spring force in one direction.



Anti-Backlash Supernuts®

SNAB Thread Mount Style



Flanges

3/4" to 1"	F100
------------	------

Dimensions available on page 32.

SNAB* 3/4" to 1" Diameter

Dia.	Lead	Part No.	Supernut® Dimensions					Preload Force (lbs)	Design Load	Max Static Load	Efficiency %	Drag Torque oz-in
			A	B (min)	B (max)	C	TH					
3/4"	0.100	SNAB7510X	1.750	2.500	3.000	0.600	1-9/16 - 18	10-20	300 lbs	1500 lbs	31	15 - 20
	0.125	SNAB7508X									36	
	0.167	SNAB7506X									44	
	0.200	SNAB7505X									49	
	0.500	SNAB5-7510X									69	
	1.000	SNAB8-7508X									79	
	1.500	SNAB12-7508X									81	
20 mm	2.000	SNAB10-7505X	82									
	4 mm	SNAB20x4M	1.750	2.500	3.000	0.600	1-9/16 - 18	10-20	300 lbs	1500 lbs	41	15 - 20
	8 mm	SNAB2-20x4M									59	
	12 mm	SNAB3-20x4M									67	
	16 mm	SNAB4-20x4M									72	
	20 mm	SNAB5-20x4M									76	
45 mm	SNAB9-20x5M	82										
24 mm	50 mm	SNAB10-20x5M	82									
	5 mm	SNAB24x5M	1.750	2.500	3.000	0.600	1-9/16 - 18	10-20	300 lbs	1500 lbs	42	15 - 20
1"	0.100	SNAB1010X	1.750	2.500	3.000	0.600	1-9/16 - 18	10-20	400 lbs	2000 lbs	25	15 - 20
	0.125	SNAB1008X									29	
	0.200	SNAB1005X									41	
	0.250	SNAB2-1008X									46	
	0.250	SNAB1004X									47	
	0.500	SNAB5-1010X									61	
	1.000	SNAB10-1010X									74	

* SNAB nuts are only as axially stiff as the spring force in one direction.